

	Area Name	Briefed Area (m2)	No.	Total Briefed Area (m2)	Total Area Provided (m2)	Notes / Assumptions
Common Amenity	Foyer Gathering / Lounge / Informal seating areas	500	1	500	885	Gateway to library, café, main lecture theatre and connection to invited and public spaces. Lounge area for 50 - 70 students - operate 24/7
	Large Exhibition	300	1	300	300	Single large exhibition space only. Wall hanging space - 70% of total perimeter.
	Exhibition Preparation Area BOH	50	1	50		
	Small Exhibition	100	1	100	95	Single smaller dedicated exhibition space. Wall hanging space - 70% of total perimeter.
	Café	170	1	170	180	120m2 Front of House, 50m2 back of house. Cold shell only to be provided. Fit-out design and works separate to project budget. Internal seating 30 - 50 people, External Seating 30-50 people
				1,120	1,460	
General Teaching	Tutorial / Seminar Rooms	75	14	1,050	1,080	Timetabled spaces. Each 15-20 students TEFMA 2.0m2 per student. 75m2 per space was quoted by Rosemary Kirkby pg 7 (3.75m2 per student)
	Informal teaching spaces	75	14	1,050	1,050	Non-timetabled spaces. Equal to timetabled space
	Design Studio Spaces	75	20	1,500	1,395	MSD - 20 Spaces for 15 to 20 people TEFMA 2.8m2 per student (3.75m2 equal to Teaching Spaces)
				3,600	3,525	
Lecture Theatres	Large Lecture Theatre	425	1	425	400	450 student capacity. 100students x 1.1; 350students x 0.9 = 425m2
	Projector / IT Room	10	1	10	10	
	Medium Lecture Theatre	155	2	310	335	120-150 student capacity 100students x 1.1; 50students x 0.9 = 155m2
	Small Lecture Theatre	66	2	132	130	50-60 student capacity 60students x 1.1 = 66m2
				877	875	
Workshops	Workshop	80	1	80	82	Hamish Hill report minimum recommendations
	Materials Store	50	1	50	65	
	Experimental Space	80	1	80		
	Model making	80	1	80	230	
	Spray Booth	20	1	20	20	
	Foam cutting and Moulding	20	1	20	20	
	Vacuum forming space	20	1	20	20	
	Metal Working Space	20	1	20	20	
	Machine Workshop	95	1	95	105	
	Wet Area	60	1	60	57	
	Office	20	1	20	35	
	External construction space	200	1	200	250	
	External store	50	1	50	52	
	3D Fabrication Workshop	60	1	60	60	Supervisor & Student Space
	Laser Cutters	30	1	30	30	EH&S High Risk Area
				885	1,046	
Information Resources Library	Library Staff Open Plan	90	1	90		9 staff @ 10m2 per person
	Discipline Library officer	14	1	14		
	Service Supervisor	14	1	14		
	Staff Meeting Room	38	1	38		
	Staff Photocopy	14	1	14		
	Collections	930	1	930		
	Reserve Collection - General			included		Existing Faculty Reserved Collection plus Maps Collection
	Reserve Collection - Maps	296	1	296		Existing collection in ERC Library Level 4.
	High Use (Open Access Reserve)	31.5	1	32		
	Reading	100	1	100		at 2.5m2 per seat = 100m2
	Collaborative spaces	264	1	264		TEFMA 4.0m2 per seat
	Individual Study Tables	39	1	39		at 3m2 per seat = 39m2
	Individual Computer Workstations	24.5	1	25		at 3.5m2 per student = 24.5m2
	Quick Access Terminals	24.5	1	25		at 3.5m2 per student = 24.5m2
	Service Point & Returns	91.4	1	91		
Library Store	150	1	150	220	(currently in basement)	
				2,121	2,255	
Computer Labs	MSD - Computer labs	69	2	138	106	TEFMA 2.3m2 per workstation. 30 students per room
	Computer Labs (Yr 1)	69	1	69	90	TEFMA 2.3m2 per workstation. 30 students per room
	Bachelor of Environment	69	2	138	140	TEFMA 2.3m2 per workstation. 30 students per room
	Computer Labs (Yr 2&3) Bachelor of Environment	69	1	69	75	TEFMA 2.3m2 per workstation. 30 students per room
	Computer Lab (Research Higher Degree)	69	1	69	75	TEFMA 2.3m2 per workstation. 30 students per room
	Print Room	50	1	50	50	Equal to existing - 2 large printers, 2 medium printers, 2 small printers
				464	461	

	Area Name	Briefed Area (m2)	No.	Total Briefed Area (m2)	Total Area Provided (m2)	Notes / Assumptions
Research Higher Degree Students	Research Work Spaces	4	100	400		100 students TEFMA 4m2 per Postgraduate Research Student
	Meeting Space / Area	20	3	60		
	Kitchenette	20	1	20		
	Photocopy	20	1	20		
				500	612	
Academic Staff	Academic Office (Full Time)	14	100	1,400	1330	100 Full-time Staff TEFMA 14m2 Office
	Academic Open Plan (Part Time)	10	100	1,000	1000	100 part-time TEFMA 10m2 Open Plan
	Meeting rooms	20	3	60	100	
	Kitchen	20	2	40	70	
				2,500	2,500	
Faculty Staff	Deans Office	20	1	20	30	TEFMA 18-20m2
	Deputy Dean	20	1	20	25	TEFMA 18-20m2
	Faculty General Manager	20	1	20	20	TEFMA 18-20m2
	School Heads	20	6	120	120	TEFMA 18-20m2 [Architecture, Landscape, Urban Design, Urban Planning, Property, Construction Management]
	Meeting Rooms	30	2	60	95	10+ capacity
	Board Room	150	1	150	140	20+people
	Support Staff	450	1	450	450	45 support staff. 10m2 per person open plan
	Kitchen	20	1	20	15	
	Archive / Store	450	1	450	330	Equal to staff area (currently in basement)
	IT Support	50	1	50	50	3-5 Full-time Staff TEFMA 10m2 per person
	IT Store	20	1	20	20	
Communication Room	30	1	30	30		
				1,410	1,325	
Specialist Spaces	Japanese Room	104	1	104	104	Dimensions to be identical to existing space
	Research Studios	80	6	480	390	
	Immersive Studio	150	1	150	140	
	Environmental Lab Workshop	50	1	50	62	
	Environmental Lab Outdoor	50	1	50	50	
	Alumni room				170	
				834	916	
Amenities	Staff			included		Separate staff amenities
	Students			included		Separate student amenities
Back of House	Loading Dock	50	1	50	60	Deliveries for materials & equipment
	Recycling Area	30	1	30		
	Refrigerated Garbage Area	10	1	10		Café tenancy
	Store	20	2	40	25	
	Cleaner	20	2	40	14	
				170	99	
Subtotal UFA				14,481	15,074	
Competition Scheme GFA by Floor Level	Basement (incl plant)					3,005
	Ground Floor					2,690
	Level 1					2,500
	Level 2					3,180
	Level 3					3,045
	Level 3a					830
	Level 4					2,985
	Level 5					1,940
	Level 5a					830
	Roof Plant (nom)					600
Total GFA				18,101	21,605	
Grossing Factor				1.25	1.43	

B

C

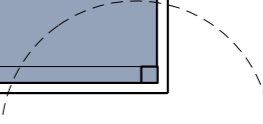
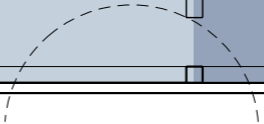
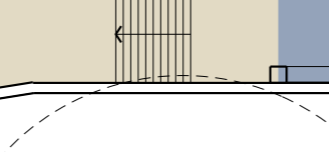
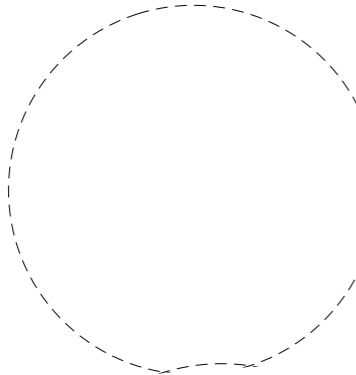
Workshop

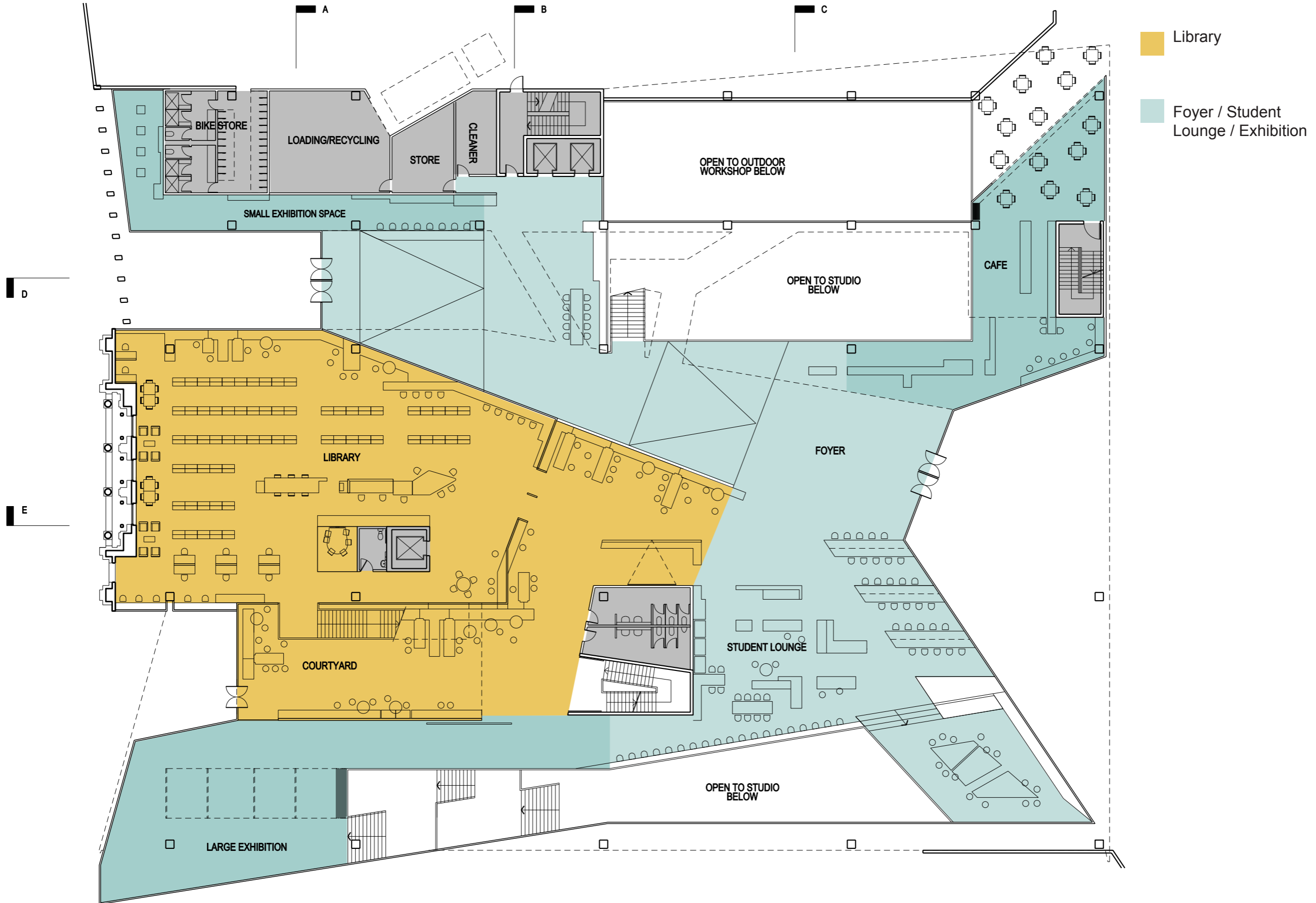
Informal Teaching

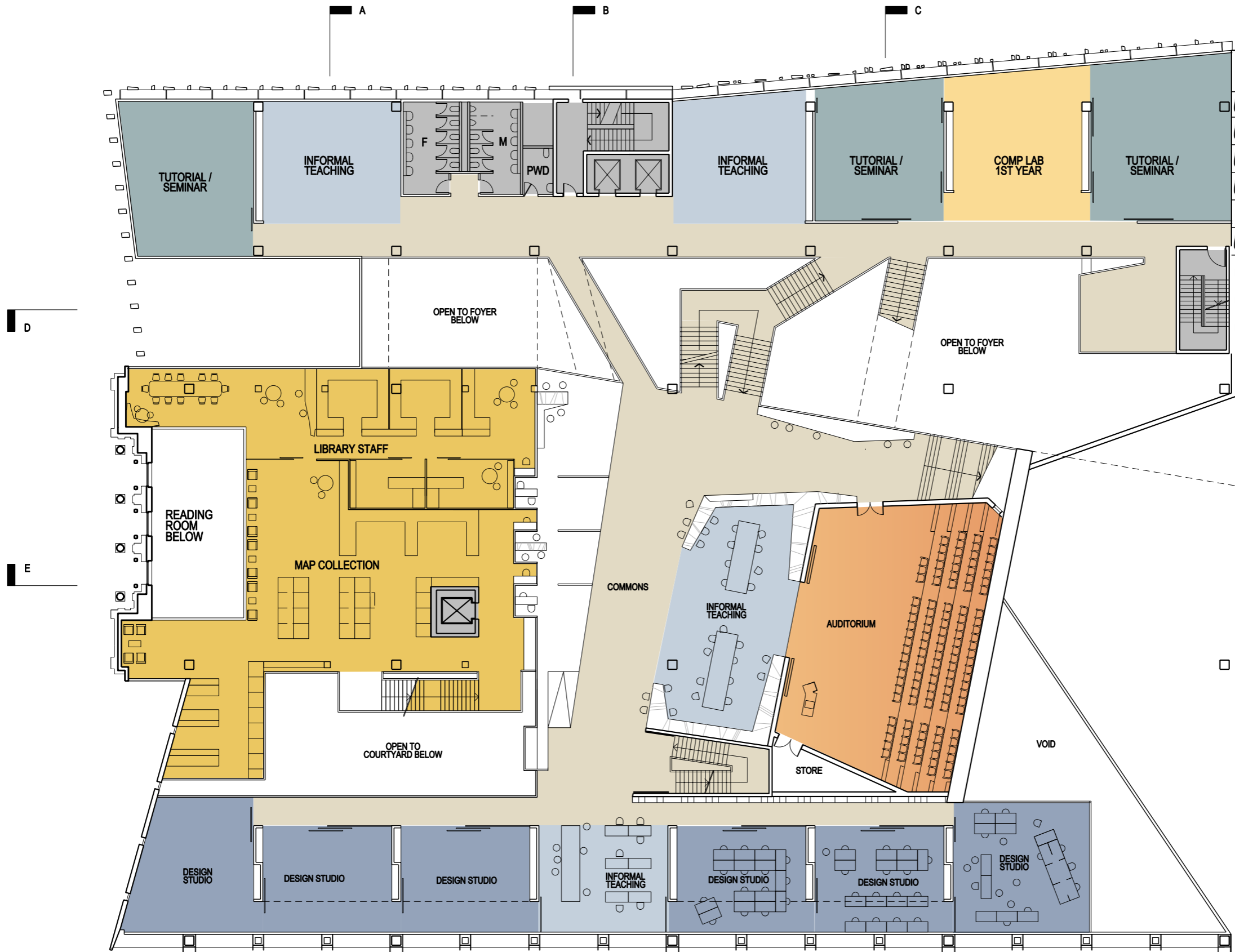
Design Studio

Library

Support Staff



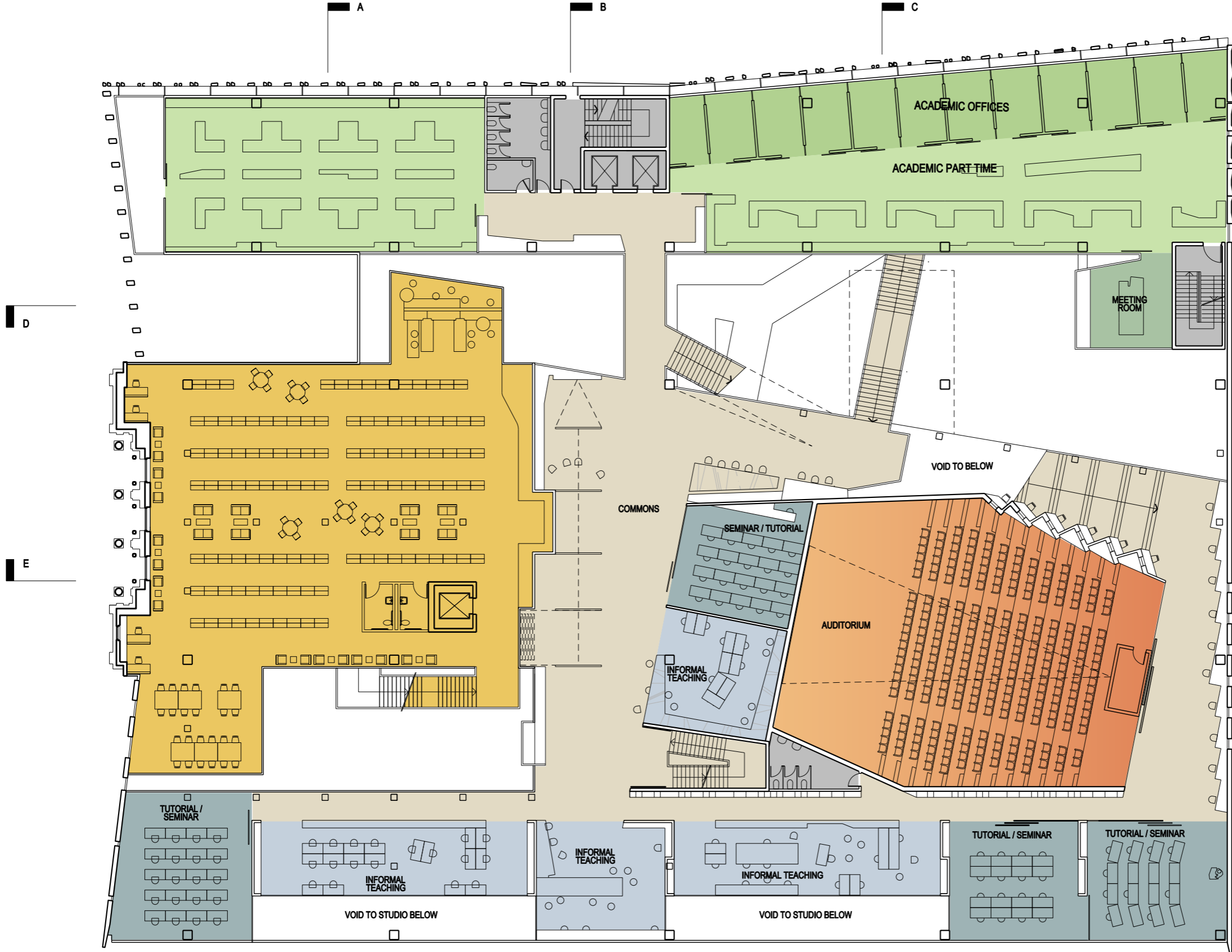




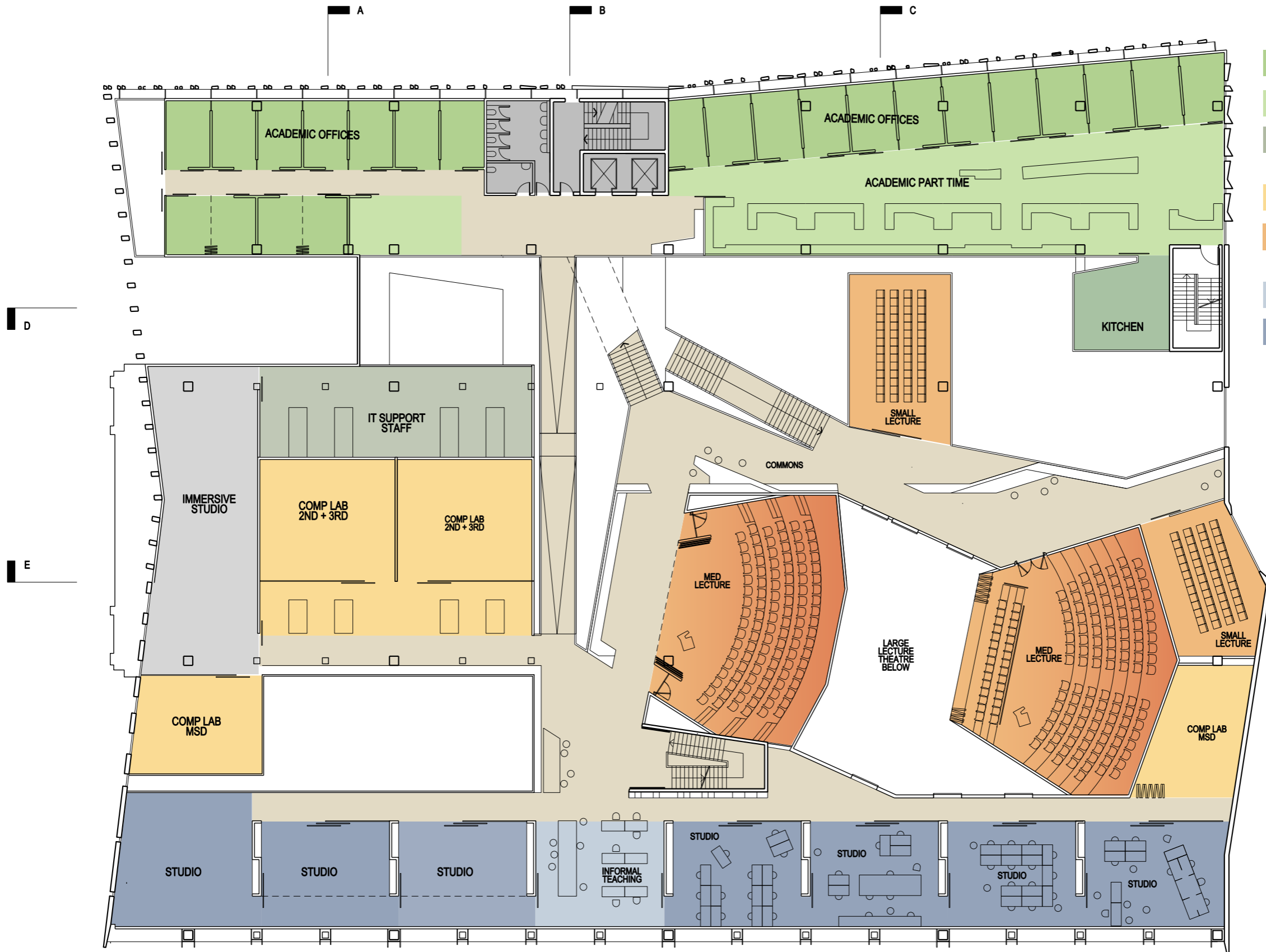
- Computer Labs
- Library
- Lecture Theatres
- Informal Teaching
- Tutorial / Seminar
- Design Studio

D

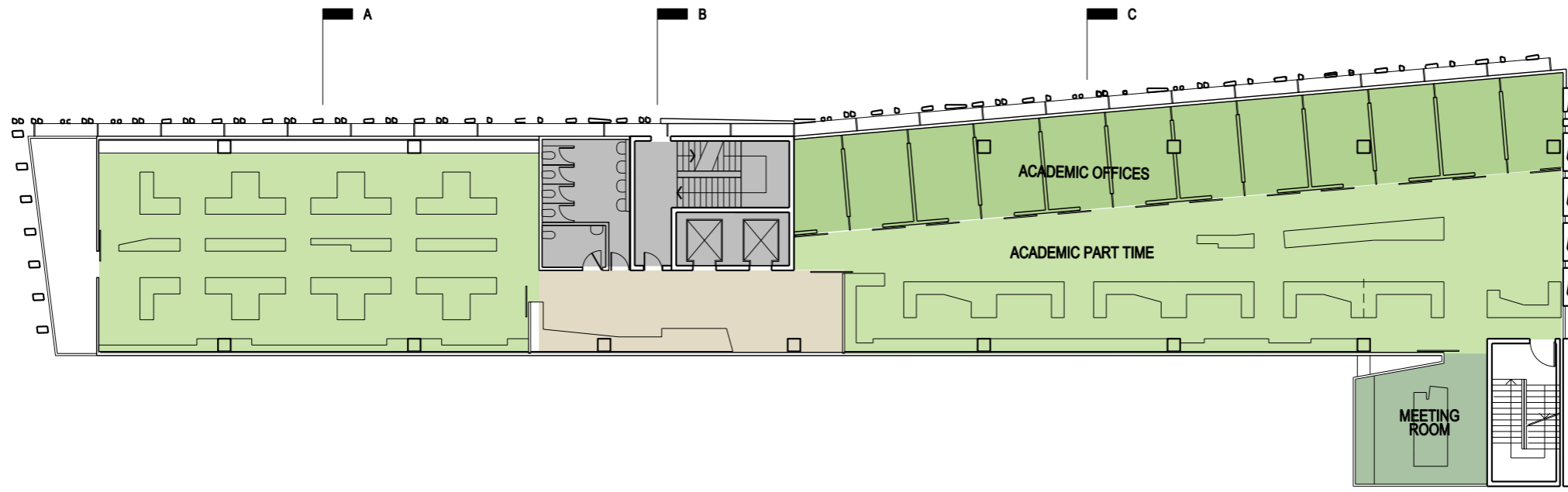
E



- Academic Staff - FT
- Academic Staff - PT
- Faculty Staff
- Library
- Lecture Theatres
- Informal Teaching
- Tutorial / Seminar

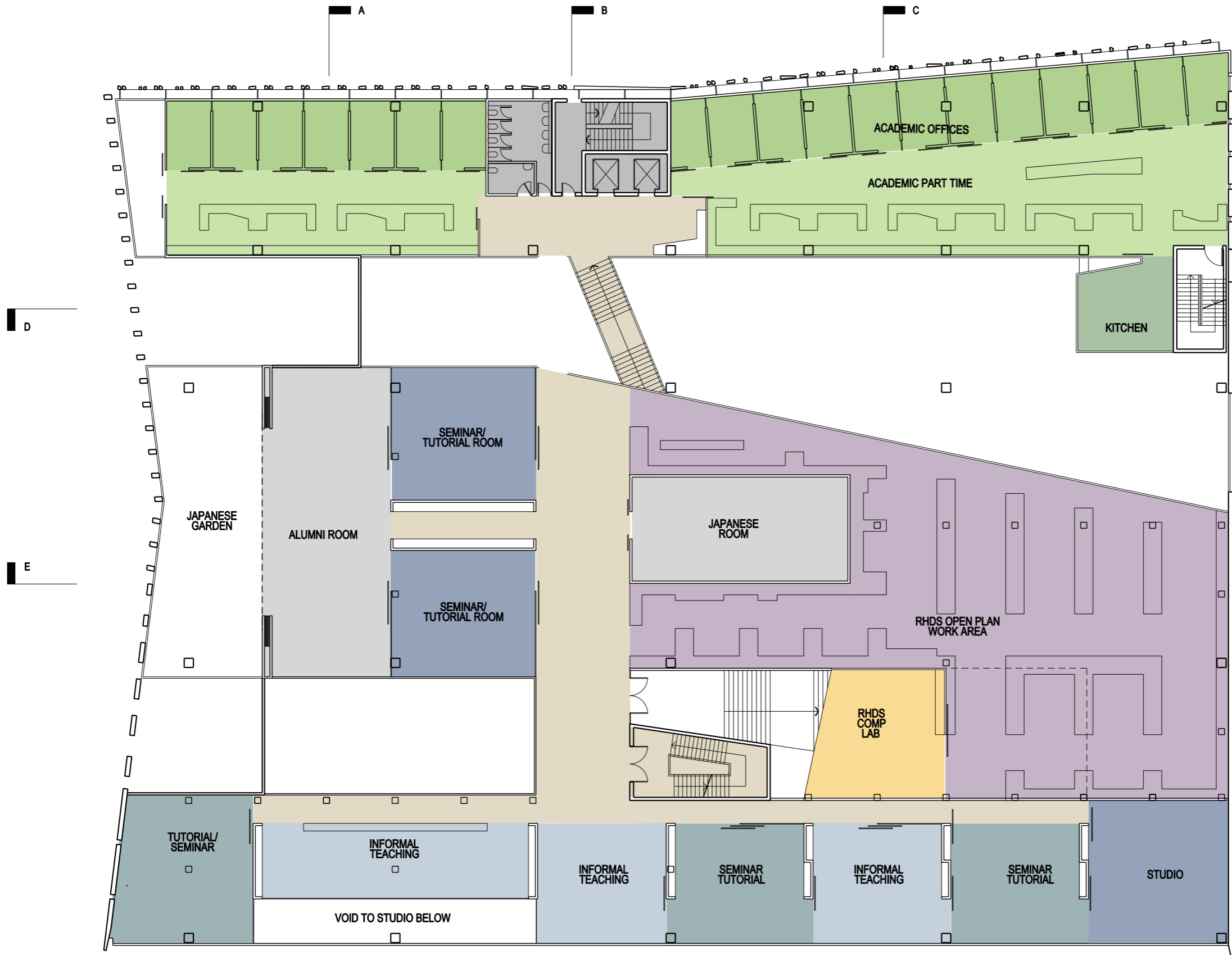


- Academic Staff - FT
- Academic Staff - PT
- Faculty Staff
- Computer Labs
- Lecture Theatres
- Informal Teaching
- Design Studio

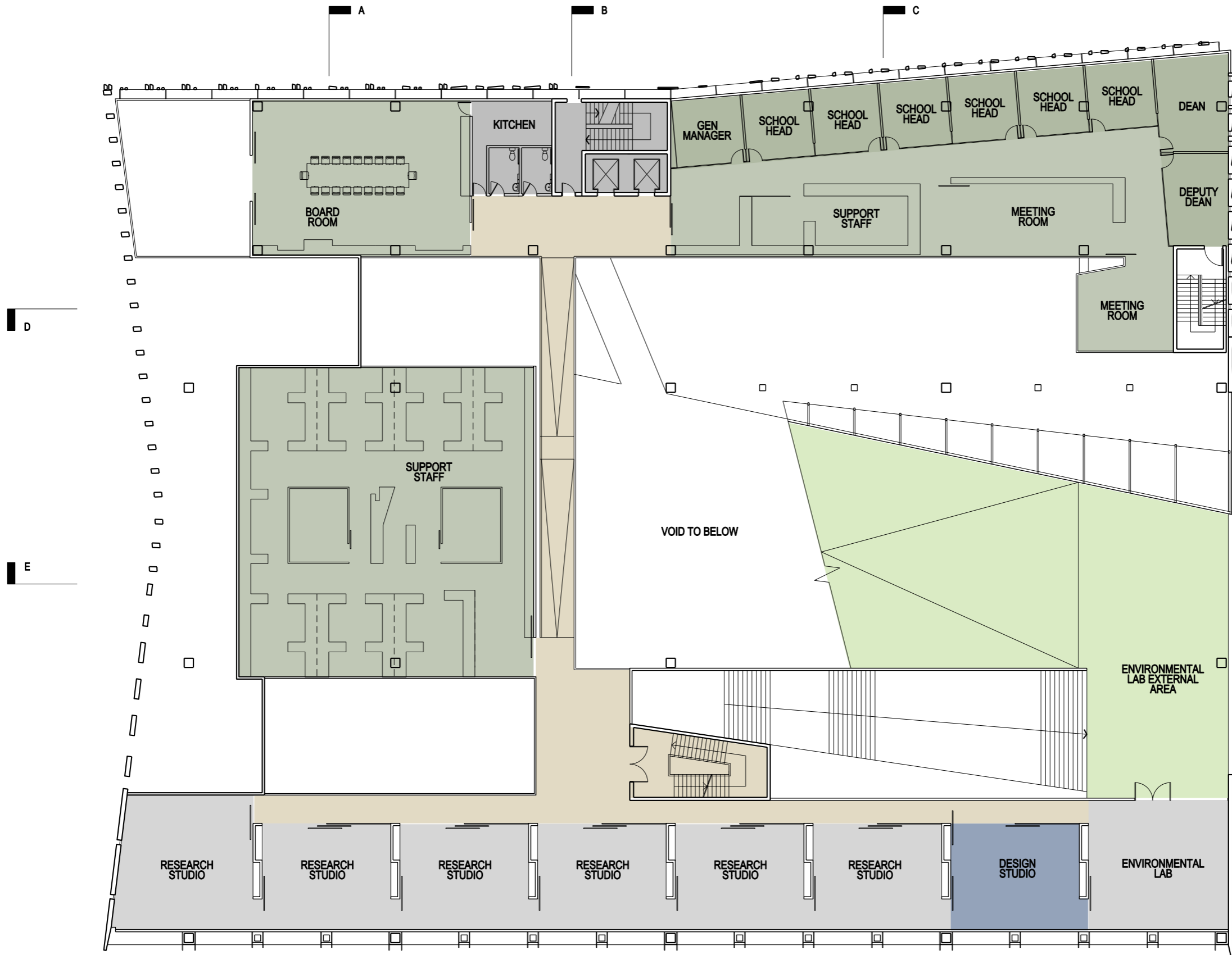


- Academic Staff - FT
- Academic Staff - PT

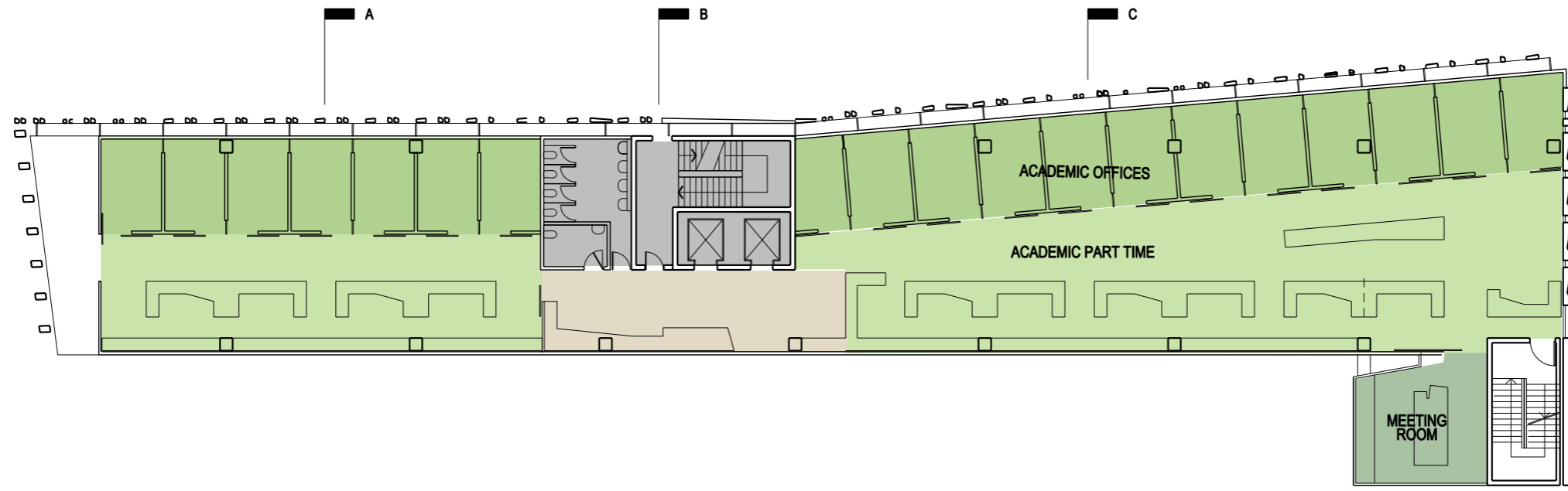
D



- Academic Staff - FT
- Academic Staff - PT
- Computer Labs
- RHDS
- Informal Teaching
- Design Studio
- Tutorial / Seminar



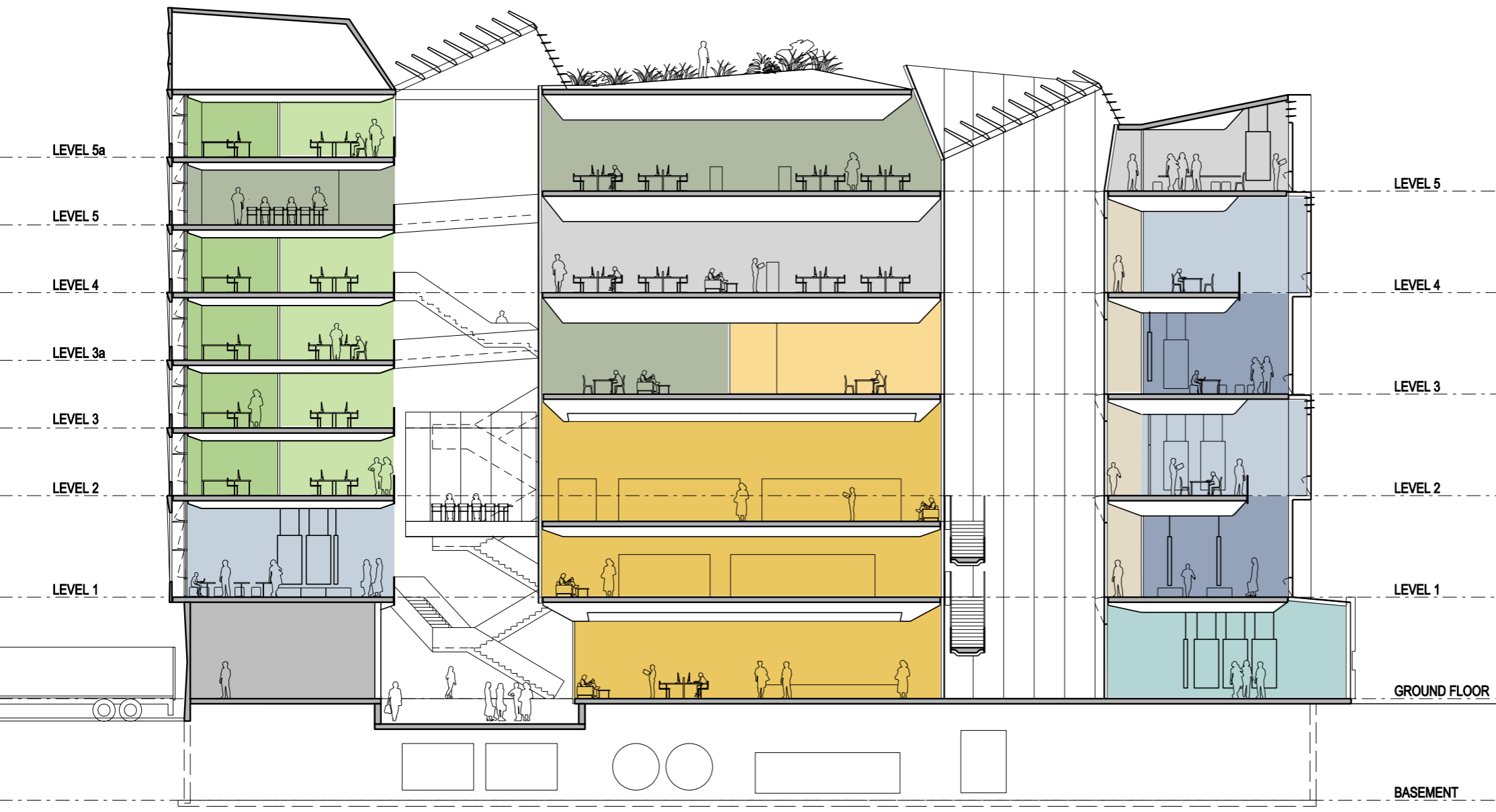
- Faculty Staff
- Research Studios
- Design Studio



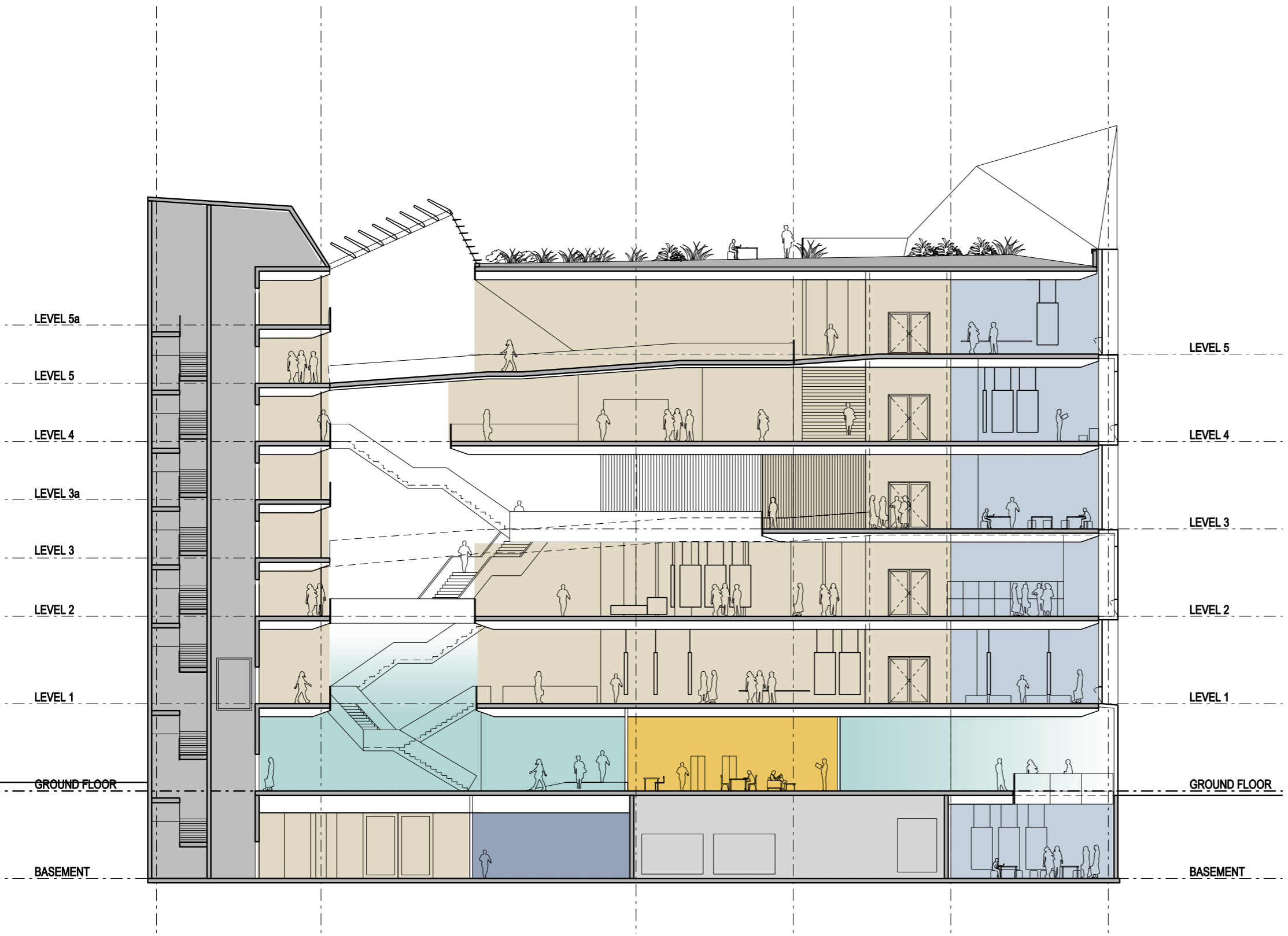
- Academic Staff - FT
- Academic Staff - PT

D

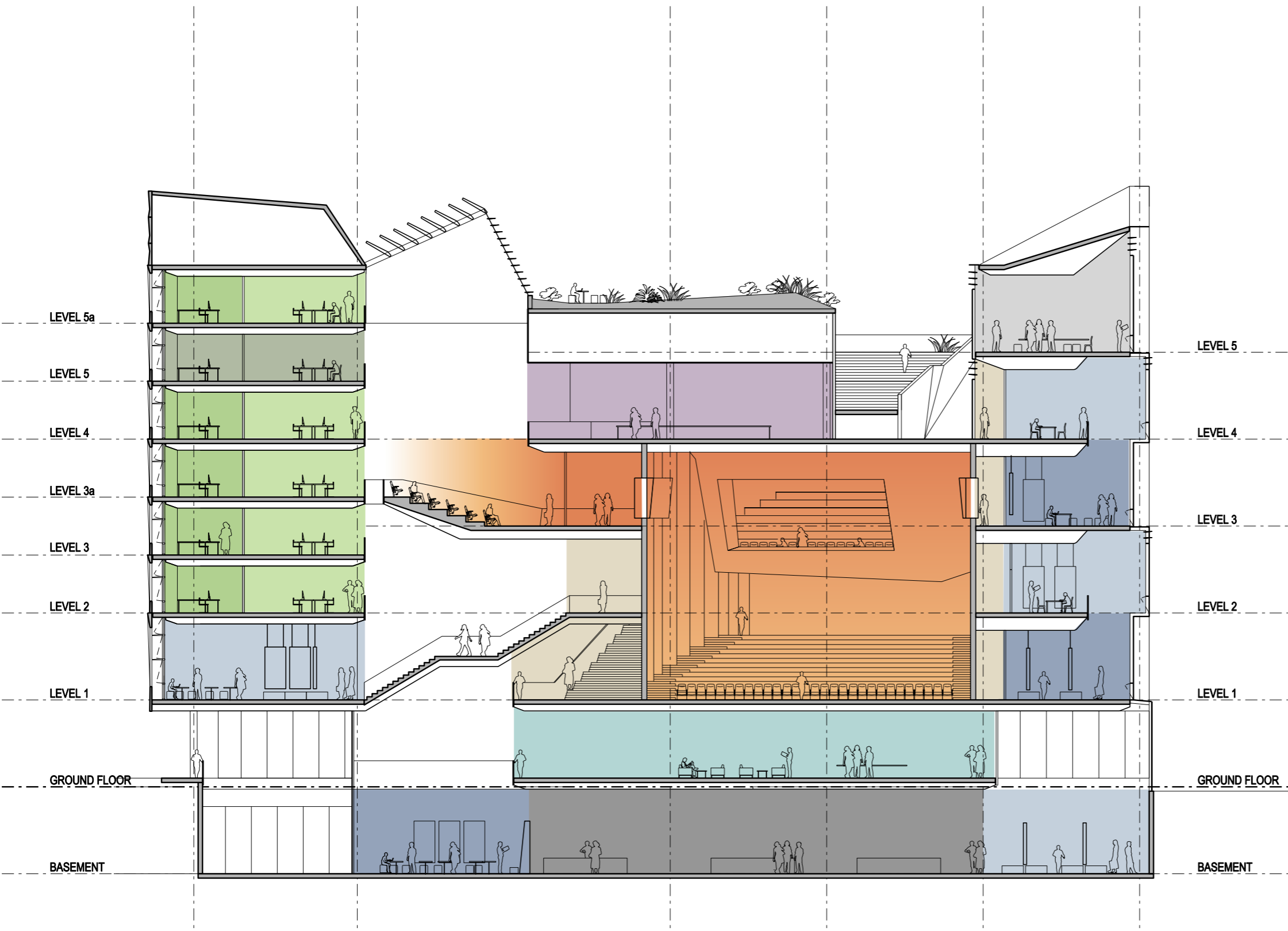




- Academic Staff - FT
- Academic Staff - PT
- Faculty Staff
- Library
- Computer Labs
- Informal Teaching
- Tutorial / Seminar
- Design Studio
- Exhibition Space

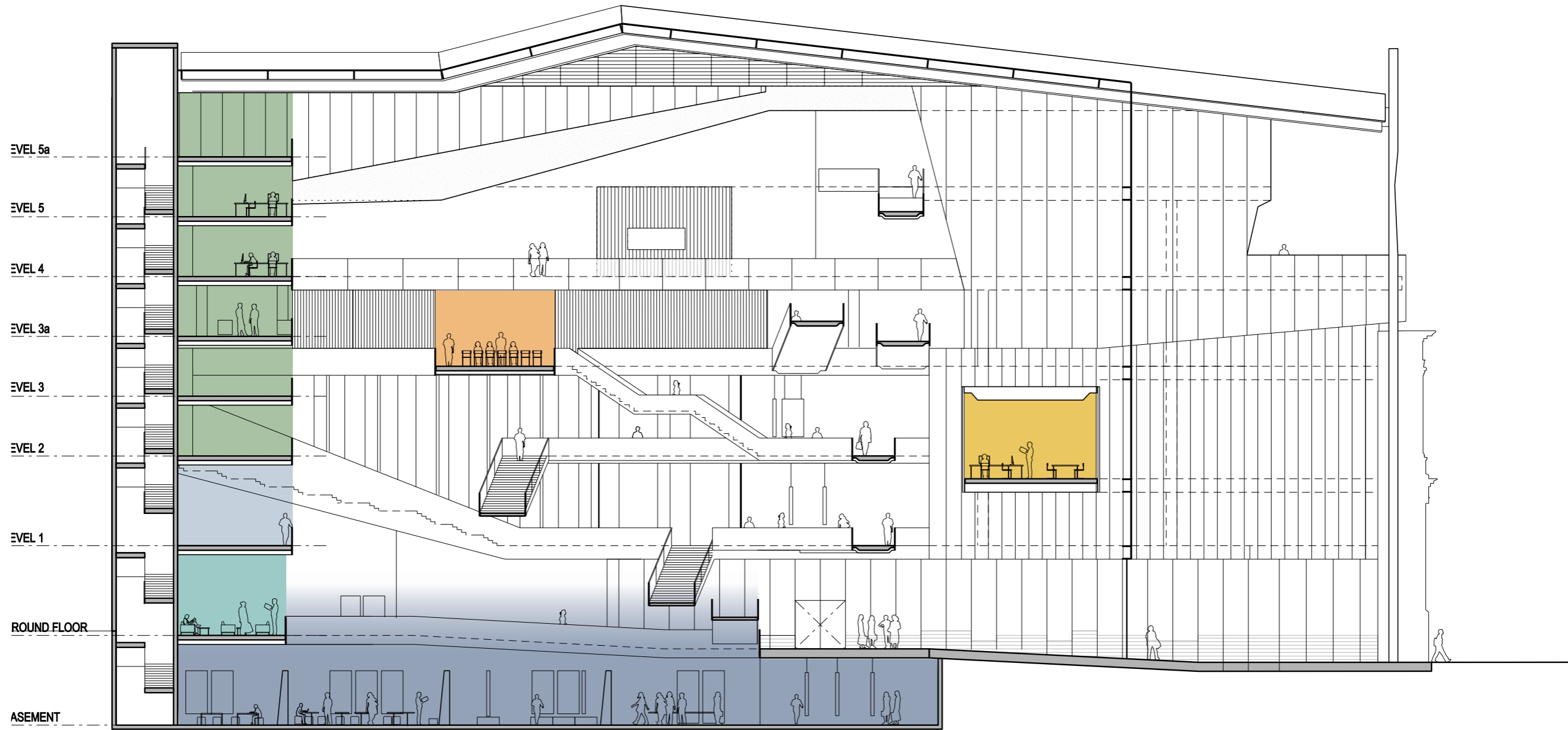


- Library
- Informal Teaching
- Tutorial / Seminar
- Design Studio
- Foyer / Student Lounge



- Academic Staff - FT
- Academic Staff - PT
- Faculty Staff
- Lecture Theatres
- Informal Teaching
- Tutorial / Seminar
- Design Studio
- RHDS
- Foyer / Student Lounge
- Workshop

- Academic Staff - FT
- Academic Staff - PT
- Faculty Staff
- Computer Labs
- Lecture Theatres
- Library
- Informal Teaching
- Design Studio
- Foyer / Student Lounge



- Faculty Staff
- Tutorial / Seminar
- Lecture Theatres
- Informal Teaching
- Library
- Workshop
- Design Studio
- RHDS
- Foyer / Student Lounge
- Workshop
- Computer Labs

